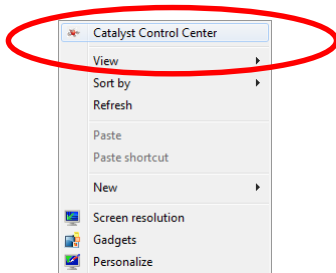


CLONE MODE IN EEG LABS

Two screens in clone mode for the ATI driver. The difficulty is that only one monitor supports 120Hz. You need to make some changes to the screen settings and you need to do so in a very specific order to get things to work. Hereby a short explanation.

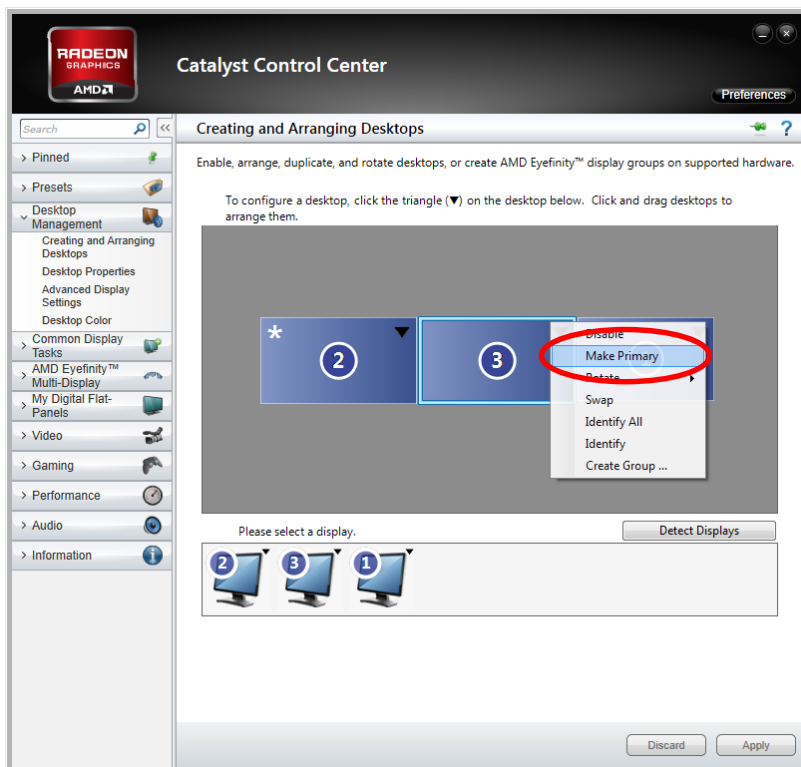
1. First open the Catalyst Control Center

There are multiple options to do so. For now right click on the desktop and select the first option “Catalyst Control Center”

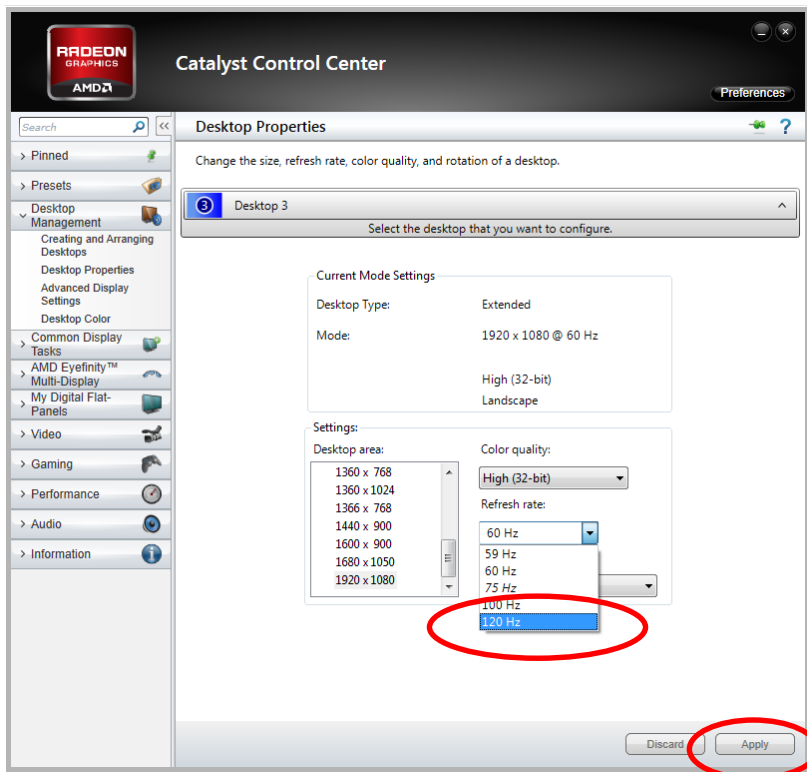


2. Now select the “Desktop Management” options tab -> “Creating and Arranging Desktops”

Right click the 120Hz monitor and select the “make primary” option. It’s highly recommended to make the subject stimulus monitor the primary once since some stimulus programs (e-prime 1.0, Psychtoolbox) have difficulties to display on a secondary monitor.



- Now again under “Desktop Management” -> but now select the “Desktop Properties”
Make sure the 120Hz monitor indeed runs at 120Hz. If not change the refresh rate to 120Hz and “Apply” the changes (button bottom right).



- Finally select the “Desktop Management” -> “Creating and arranging Desktops” again.
Here you can duplicate the screen. You need to select the screen at the bottom. It should be the non 120Hz screen of the same resolution. If there are multiple you need to make sure to select the screen that is connected to the same display card. Now simply right click the screen and select the duplicate option.

